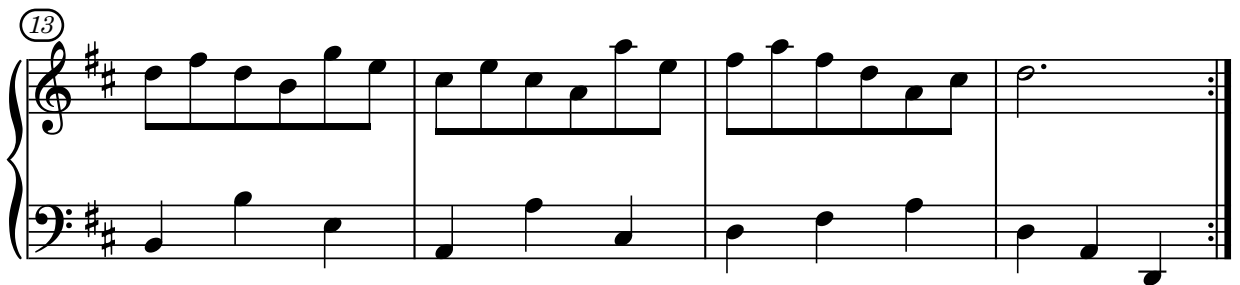
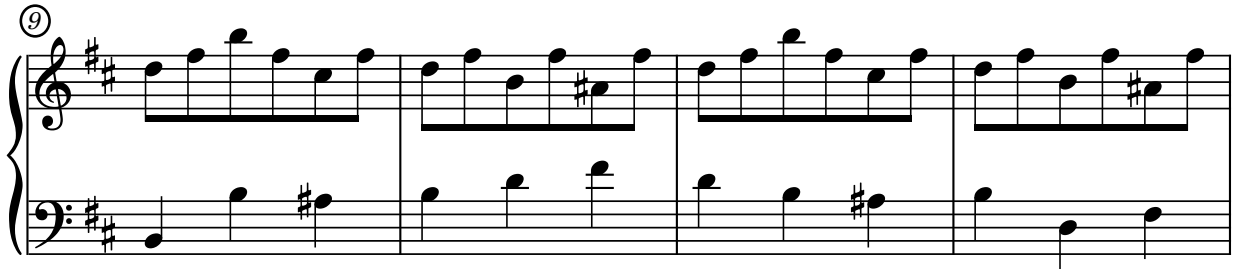
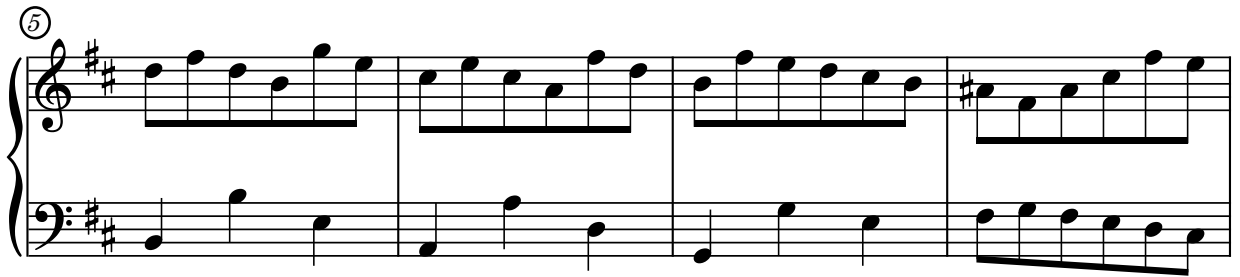
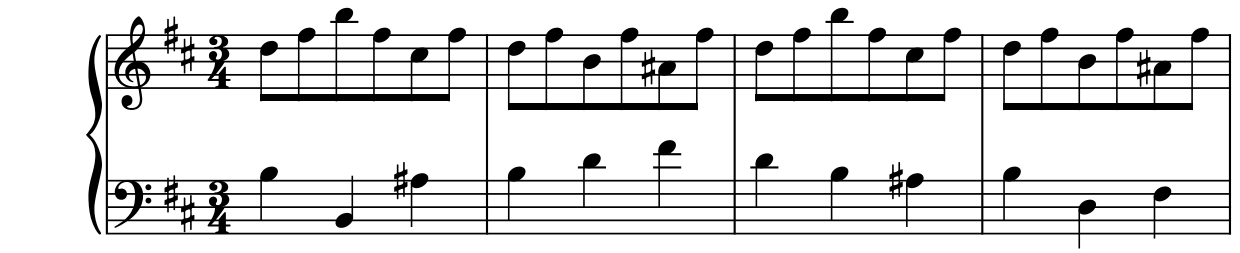


Minuetto in Bm

Dalla Suite francese n.3 BWV 814

J.S.Bach



(17)

Measures 17-20 of a musical score in D major. The treble clef part features a descending eighth-note scale in measures 17 and 18, followed by a half-note scale in measure 19 and a half-note rest in measure 20. The bass clef part plays a steady eighth-note accompaniment throughout the four measures.

(21)

Measures 21-24 of a musical score in D major. The treble clef part has a half-note scale in measure 21, a half-note scale in measure 22, a half-note scale in measure 23, and a half-note rest in measure 24. The bass clef part continues with an eighth-note accompaniment, featuring some chromatic movement in measures 22 and 23.

(25)

Measures 25-28 of a musical score in D major. The treble clef part features a half-note scale in measure 25, a half-note scale in measure 26, a half-note scale in measure 27, and a half-note scale in measure 28. The bass clef part continues with an eighth-note accompaniment, with a half-note rest in measure 27.

(29)

Measures 29-32 of a musical score in D major. The treble clef part features a half-note scale in measure 29, a half-note scale in measure 30, a half-note scale in measure 31, and a half-note scale in measure 32. The bass clef part continues with an eighth-note accompaniment, with a half-note rest in measure 31.

(33)

Measures 33-36 of a musical score in D major. The treble clef part features a half-note scale in measure 33, a half-note scale in measure 34, a half-note scale in measure 35, and a half-note rest in measure 36. The bass clef part continues with an eighth-note accompaniment, with a half-note rest in measure 35.